



qBasePlus: import file guidelines

Mastercycler ep realplex



General information

Import files should contain a list of Quantification Cycle (**Cq**) values. Depending on the instrument software that generates the data, Cq values might have alternative names such as Ct, CP, TOP, etc. Cq is the official abbreviation in the Real-time PCR Data Markup Language (more info on <http://www.rdml.org>). The qBasePlus calculation engine is based on Cq values. Raw amplification curve data are not (yet) supported.

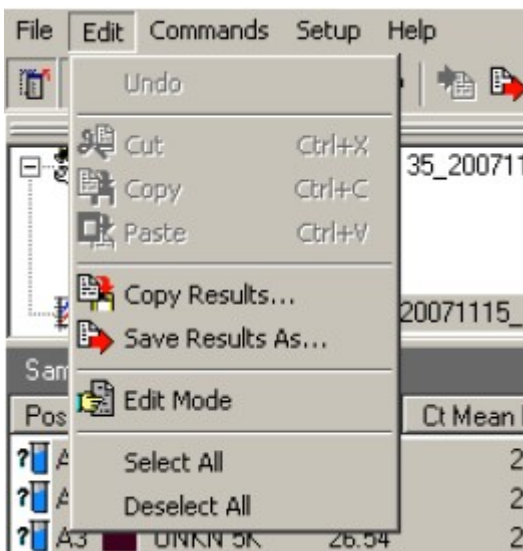
Import file formats should be either a tab delimited text file (.txt), a comma or semicolon separated value file (.csv) or a Microsoft Excel file (.xls). Microsoft Excel 2007 (.xlsx), OpenOffice.org Calc (.ods) and proprietary or binary instrument files are not supported.

In qBasePlus, there are restrictions on sample, target and run names. Only the following characters are allowed: all alphanumerical characters (0-9, a-z, A-Z), space, _, -, \$, #, :, ^, . and the greek letter mu (μ). **Illegal characters** such as brackets and slashes should be removed or replaced.

Generating Mastercycler ep realplex export files

As of version 2.0 (freely available to all users) the realplex software offers the possibility to export results in the qBase format. The export files from the realplex software version 1.5 are not supported.

Results from the table Samples/Analysis in the navigation tree can be copied and saved using the menu item Edit.



The dialogue window allows users to select qBase as the export format. The qBase entry will only be present if the relevant experiment contains PCR data. Melting curve and endpoint data can not be used. Because results and sample information have to be

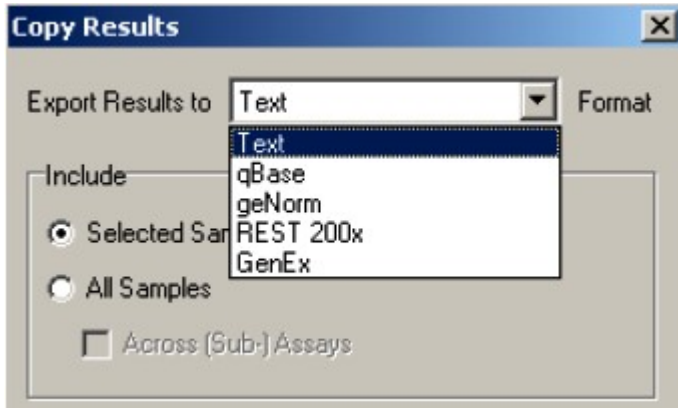


qBasePlus: import file guidelines

Mastercycler ep realplex



arranged in a specific format, the analysis data selection is deactivated.



If results of multiplexed assays are to be exported in the qBase format, data for each dye needs to be saved as individual files.

Importing Mastercycler ep realplex export files

qBasePlus v1.0 does not contain a named importer for Mastercycler ep realplex files. As version 2.0 of the realplex software supports export into the qBase format, realplex export files can be imported in qBasePlus using the qBase format.